

# Le Cout des Sinistres Dans Les Bâtiments Patrimoniaux

## The Cost of Losses in Heritage Buildings

**Christopher Marrion PE, F-SFPE, MScFPE**

Marrion Fire & Risk Consulting – CEO/Director

ICOMOS-ICORP: Chairperson

National Fire Heritage Center, Director

001.646.642.1265

[chris.marrion@marrionconsulting.com](mailto:chris.marrion@marrionconsulting.com)

[www.marrionconsulting.com](http://www.marrionconsulting.com)



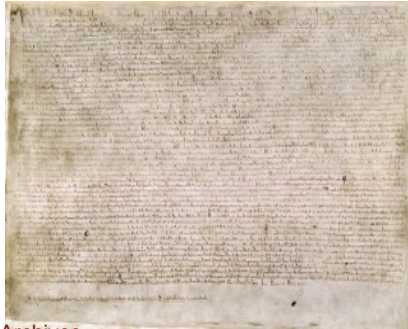
# Losses in Heritage Structures and Sites



Art



Structures, Collections



Archives



Wildlands- Old Growth Forests, Sequoias

© REUTERS / Albany Stock Photo

© National Park Service

How does/can one place a value on unique and irreplaceable historic sites, structures, collections and surroundings?

Some tangible costs can be accounted for.

Intangible costs are more challenging and should be considered.

How can we better start to identify and protect these.

# Property Losses

## Structure

authenticité  
artisanat  
matériaux

## Intérieurs

finitions intérieures

## Contenu

collections  
ameublement

## alentours

végétation  
faune  
impacts à long terme (érosion, etc.)

## Structure

authenticity  
craftsmanship  
materials

## Interiors

interior finishes

## Contents

collections  
furnishings

## Surroundings

vegetation  
wildlife  
long term impacts (erosion, etc)

Short/long term impacts- water, mold  
Damage – repairable, beyond repair

Structural damage  
-Security/vandalism  
-Environment inside –temp/humidity  
-Weather – rain, snow, heat  
-Light/sun



# Spirit of Place / Meaning

## Rôles importants

- Centre de rassemblement communautaire
- Centre spirituel
- Des lieux de rencontre
- Ancrage physique au sein d'une communauté
- Un sentiment d'identité locale et régionale
- Un sentiment d'appartenance
- Maintenir la fierté de la communauté

## Conséquences

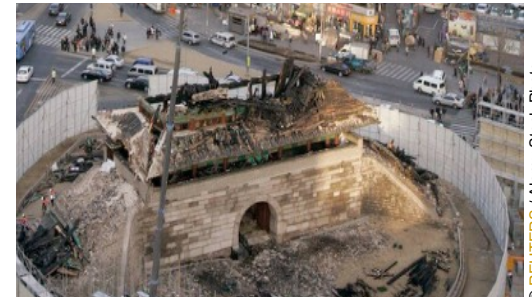
- Communauté locale
- Régional
- Mondial

## Significant Roles

- Community gathering center
- Spiritual center
- Meeting places
- Physical anchor within a community
- A sense of local and regional identity
- A sense of belonging
- Maintain community pride

## Impacts

- Local Community
- Regional
- Global



# Knowledge Losses

## Sources

Livres, manuscrits  
Photographies  
Film  
Enregistrements  
Artefacts  
Collections  
Flore/faune préservée  
Structure, Acoustique

## Sources

Books, manuscripts  
Photographs  
Film  
Recordings  
Artefacts  
Collections  
Preserved flora/fauna  
Structure, Acoustics

Damage – repairable, beyond repair  
Short/long term impacts- water, mold



© Jordi Guzman



© REUTERS / Alamy Stock Photo

# Mission Losses

Les établissements d'enseignement

Installations de recherche

Laboratoires de conservation

Services de catalogage

Des expositions

Centre spirituel

Cérémonies/Événements

Revenu pour la communauté

Capacité à sauvegarder à l'avenir

-accords de prêt

-des dons

-la sécurité publique

Educational facilities

Research facilities

Conservation laboratories

Cataloguing services

Exhibitions

Spiritual center

Ceremonies/Events Venue

Revenue for community

Ability to safeguard in future

-loan agreements

-donations

-public safety



# Community Resilience

During times of crisis/disasters

After crisis/disasters



St George's Church, Drohobych, Ukraine

# Environment

## Où

Air  
Eau  
Atterrir

## Quoi

CO, CO2  
Sous-produits toxiques - Plomb  
L'eau de ruissellement de la lutte  
contre l'incendie

## Répercussions

Court terme  
Contamination à long terme  
Réchauffement global/  
changement climatique

## Where

Air  
Water  
Land

## What

CO, CO2  
Toxic By Products - Lead  
Water run-off from fighting fire

## Impacts

Short Term  
Long Term contamination  
Global warming/climate change



Windsor Castle: 6 mil liters of firefighting water (soil, water system, etc)

© Martin Beckell / Alamy Stock Photo



Wildfire CO/CO2 emissions: 5-10%

© National Park Service



# Life/Quality of Life

## OMS?

Occupants

employés, visiteurs, résidents

Intervenants d'urgence

## De quoi ?

Flamme, Chaleur

Fumée

Gaz toxiques (CO, CO<sub>2</sub>)

## Répercussions

Blessures (court/long terme)

Décès

Psychologique

## Who?

Occupants

employees, visitors, residents

Emergency Responders

## From What?

Flame, Heat

Smoke

Toxic Gases (CO, CO<sub>2</sub>)

## Impacts

Injuries (short/long term)

Death

Psychological



# Losses

---

Life

Property

Spirit of Place/Meaning

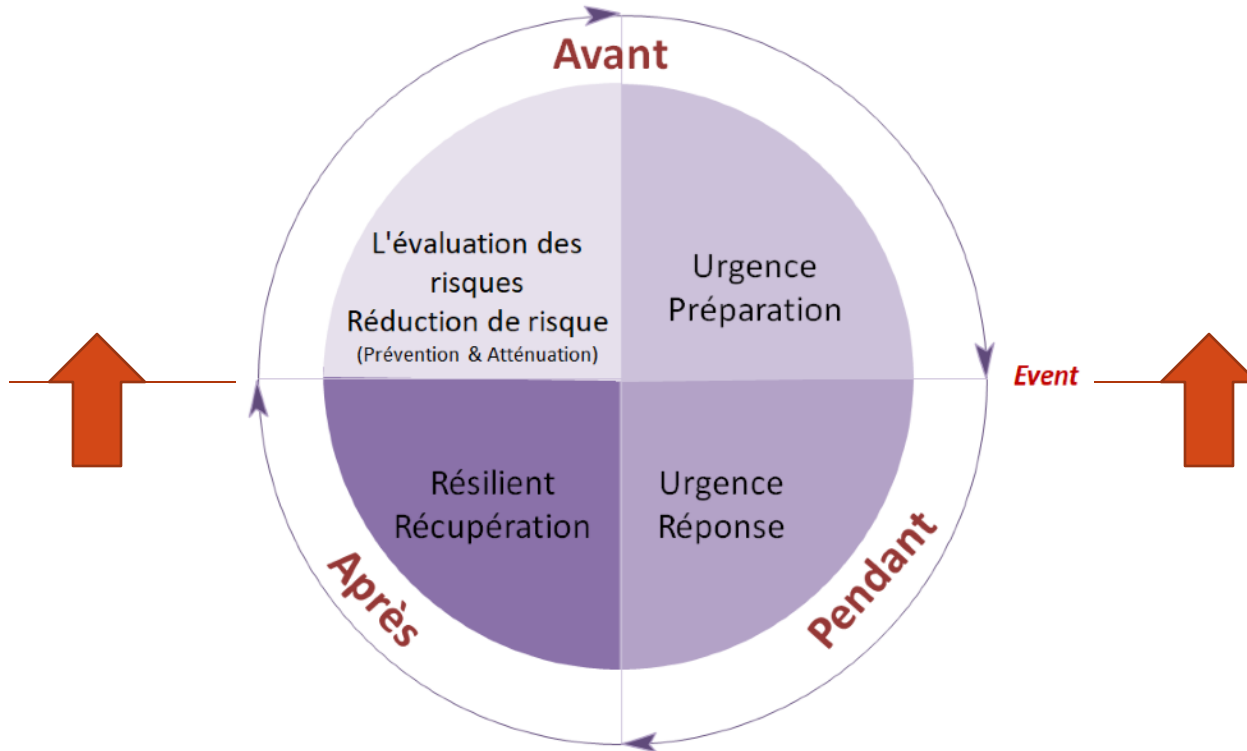
Knowledge

Mission

Community Resilience

Environment

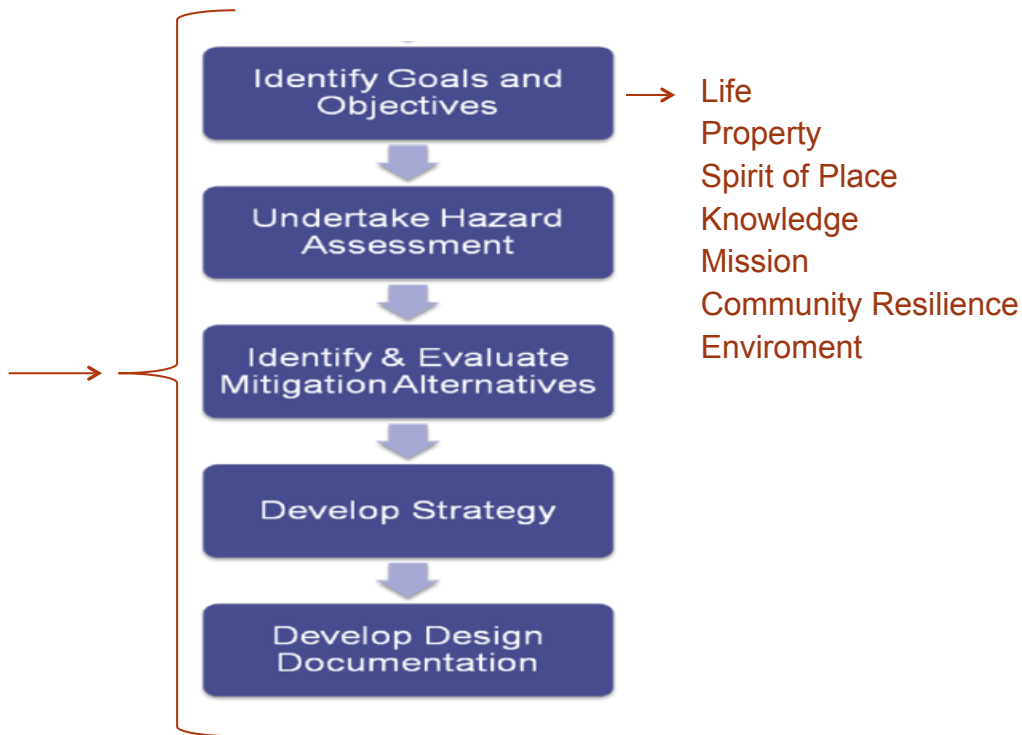
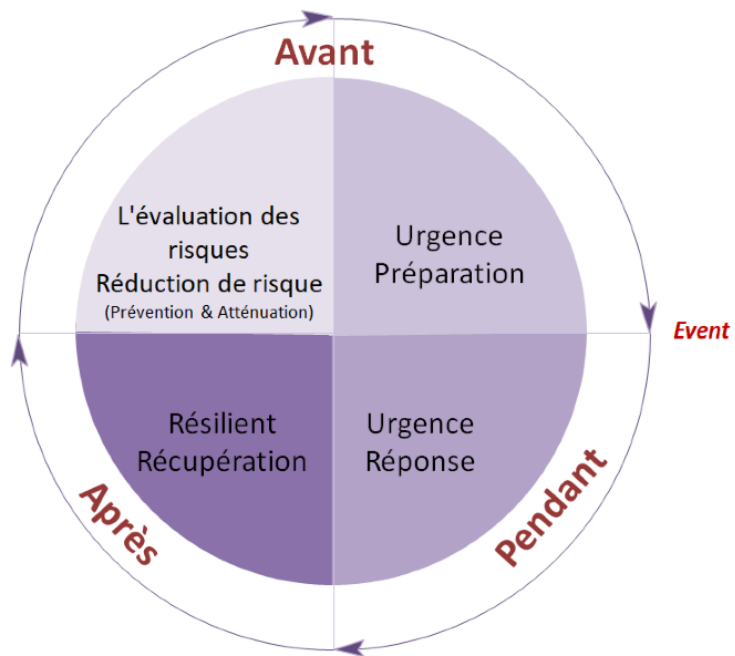
# Losses



Response/Recovery to Prevention/Mitigation



# Losses



# The Cost of Losses in Heritage Buildings



Sungnyemun Gate, S Korea

© REUTERS / Alamy Stock Photo



Ménége Militaire, Quebec

© 2008 Bernard Bastien / SPIQ.CA



Windsor Castle

© PA Images / Alamy Stock Photo



National Museum of Brazil

© REUTERS / Alamy Stock Photo

Fire Prevention is Really More An Investment than a Cost in Protecting Our Heritage from Loss.



# Le Cout des Sinistres Dans Les Bâtiments Patrimoniaux

## The Cost of Losses in Heritage Buildings

**Christopher Marrion PE, F-SFPE, MScFPE**

Marrion Fire & Risk Consulting – CEO/Director

ICOMOS-ICORP: Chairperson

National Fire Heritage Center, Director

001.646.642.1265

[chris.marrion@marrionconsulting.com](mailto:chris.marrion@marrionconsulting.com)

[www.marrionconsulting.com](http://www.marrionconsulting.com)

